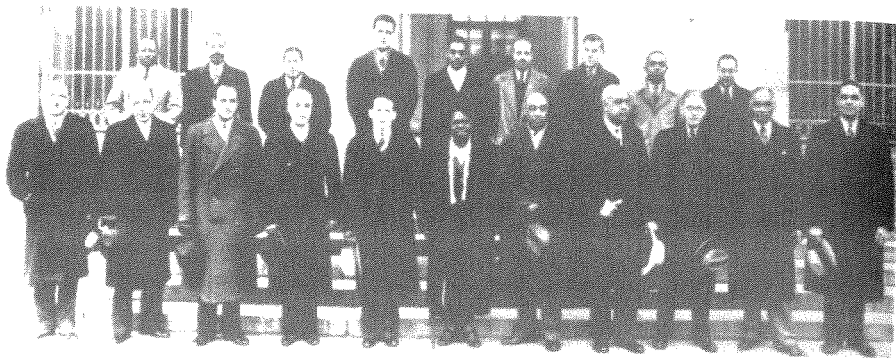


#### 4. A "Black Cabinet" Assembles, 1938



The members of the "Black Cabinet" in 1938 included (front row, left to right) Ambrose Caliver, Department of the Interior; Roscoe C. Brown, Public Health Service; Robert C. Weaver, Housing Authority; Joseph H. Evans, Farm Security Administration; Frank Horne, Housing Authority; Mary McLeod Bethune, National Youth Administration; Lawrence A. Oxley, Department of Labor; William J. Thompkins, Recorder of Deeds; Charles E. Hall, Department of Commerce; William I. Houston, Department of Justice; Ralph E. Mizelle, Post Office; (back row, left to right) Dewey R. Jones, Department of the Interior; Edgar Brown, Civilian Conservation Corps; J. Parker Prescott, Housing Authority; Edward H. Lawson Jr., Works Progress Administration; Arthur Weiseger, Department of Labor; Alfred Edgar Smith, Works Progress Administration; Henry A. Hunt, Farm Credit Administration; John W. Whitten, Works Progress Administration; and Joseph R. Houchins, Department of Commerce.